

**PALM  
JEBEL ALI**

VILLA

R U B Y  
S U N S E T

THE CORAL COLLECTION

**NAKHEEL**

Index

1. A CURATED COLLECTION

THE  
CORAL VILLAS

Serenity By The Sea

In a coral villa, happiness flows endlessly.

Beachfront living at its finest	—	P. 6
An iconic neighbourhood	—	P. 15
Introducing the Coral Collection	—	P. 20

2. LIVE IN THE MASTERPIECE

OWN A PIECE  
OF HISTORY

The Coral Collection	—	P. 28
Villa Ruby Sunset	—	P. 34

A CURATED COLLECTION

THE  
CORAL  
VILLAS

1



Serenity By The Sea

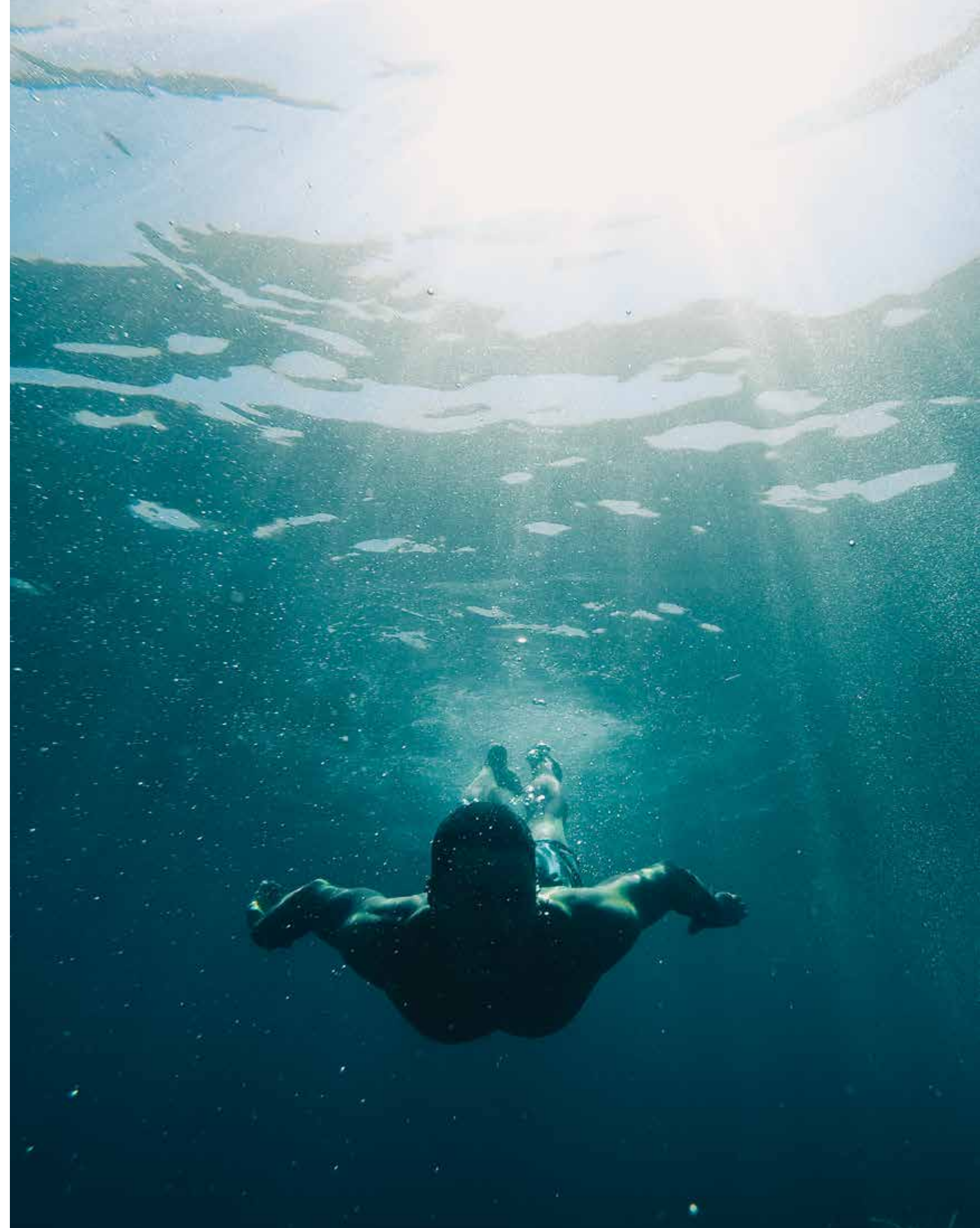
Beachfront living at its finest	—	P.6
An iconic neighbourhood	—	P.15
Introducing the Coral Collection	—	P.20

— BEACHFRONT LIVING AT ITS FINEST

# SUN, SEA, SAND, & SOPHISTICATION

ALL YOUR **DESIRES** HAVE  
FOUND A HOME.

Welcome to Palm Jebel Ali, a world-class lifestyle destination meticulously designed and impeccably curated, providing unrivalled luxury living to its residents.



Live a life of **serenity and comfort** in Dubai's most coveted district, a true kaleidoscope born out of colourful greenery, azure waters, and pristine white sands.

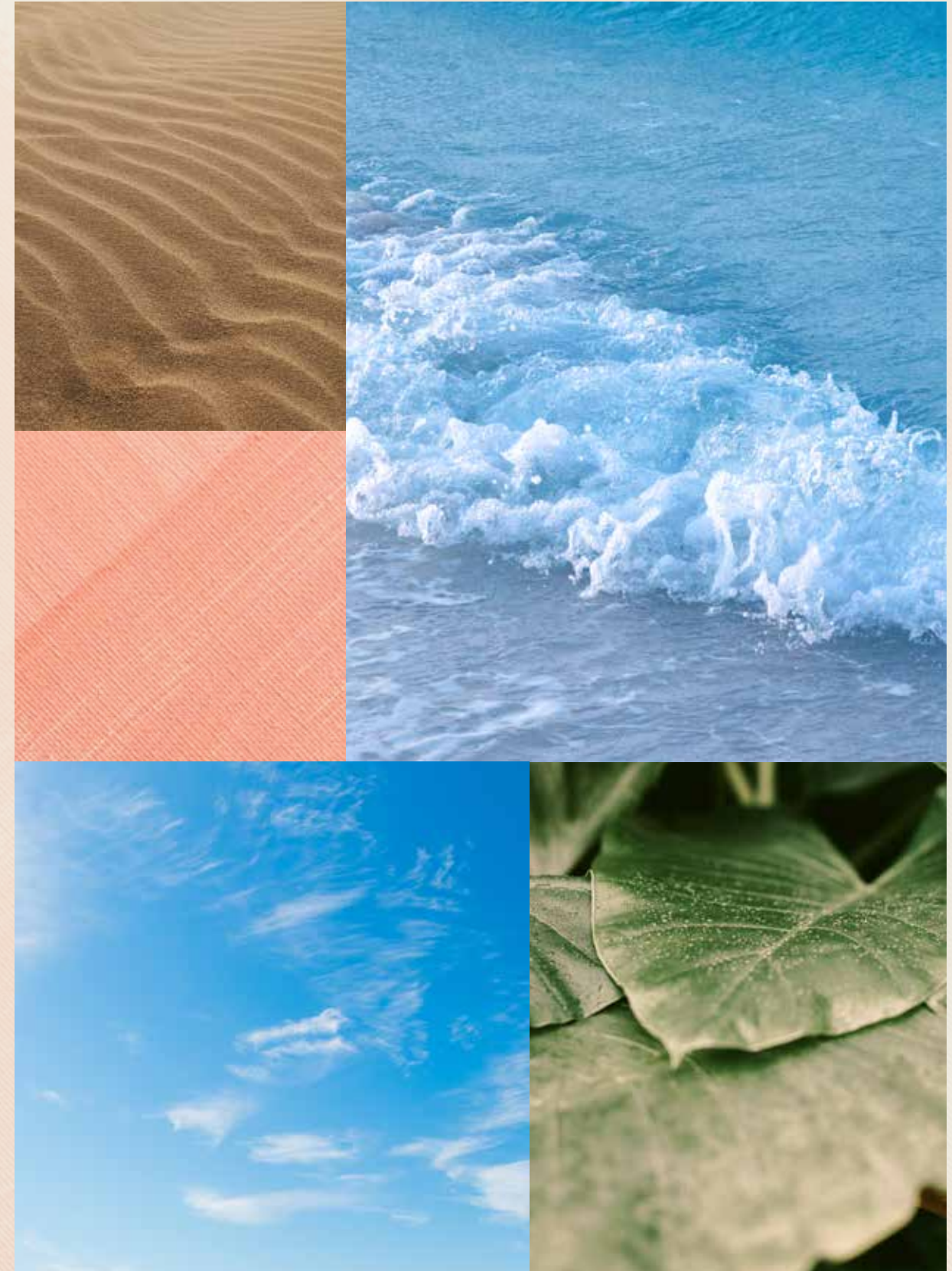
**LIVE IN HARMONY WITH NATURE, BETWEEN THE CITY AND THE SKY.**

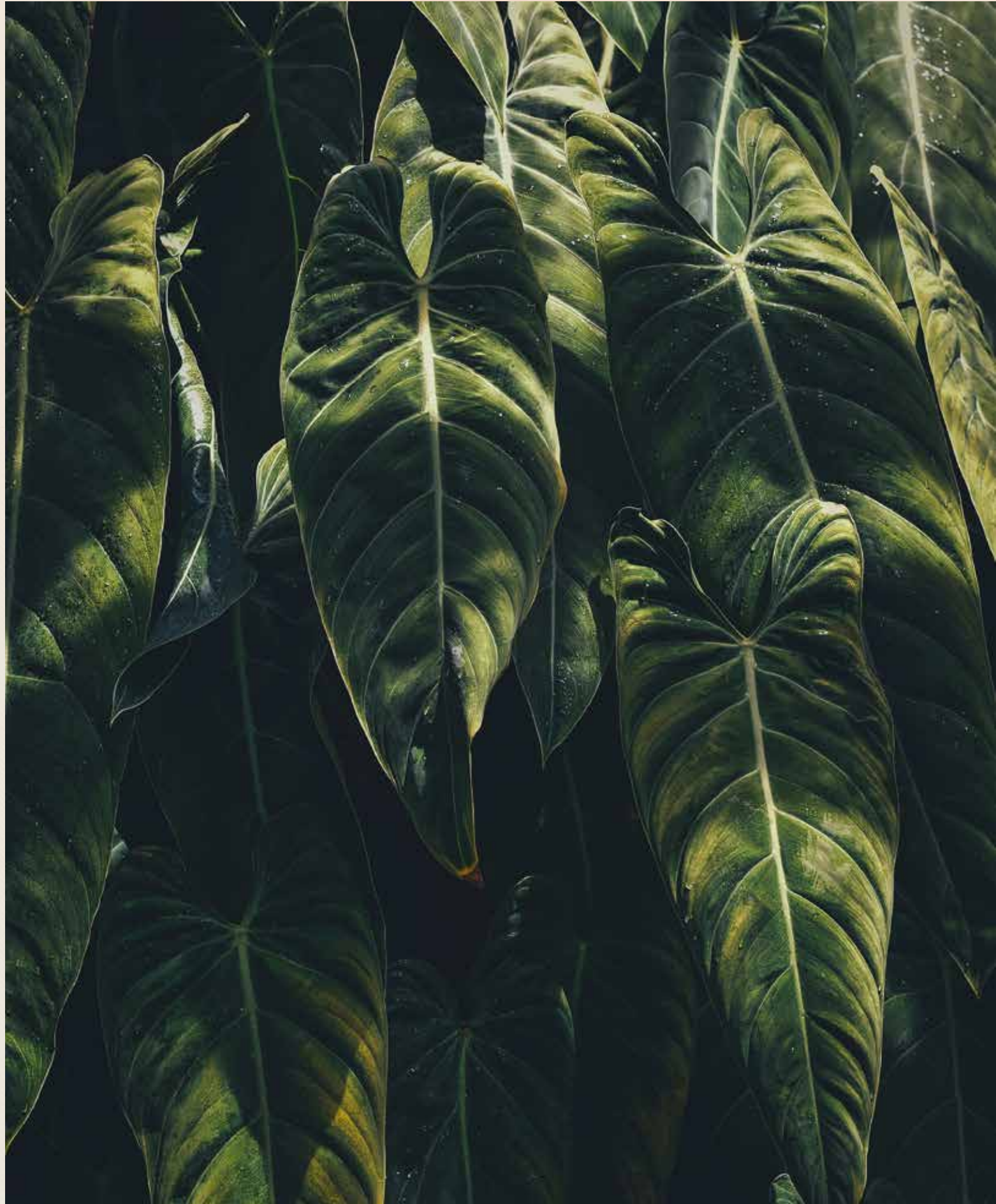
Palm Jebel Ali rises from the sea to form a perfect paradisiacal archipelago. This masterpiece of luxury living offers a unique perspective on Dubai's skyline from a haven of tranquillity, and boasts the longest coastline of any destination in Dubai. Palm Jebel Ali is located minutes away from the energy of the city, with excellent connectivity via Sheikh Zayed Road (E11) to other Dubai destinations or to Abu Dhabi. Palm Jebel Ali will be the feature destination of Dubai's rapidly developing southern urban centre. Spectacular properties and five-star amenities are skilfully woven together to create a highly desirable residential destination.





THE  
FRONDS  
CORAL COLLECTION





— FLOURISHING GREEN FRONDS

## AN ICONIC NEIGHBOURHOOD

**THE PERFECT BLEND OF ISLAND  
AND URBAN LIVING.**

Each exclusive frond forms its own thoughtfully planned private neighbourhood. Discover elegant streets painted in varying shades of green. Lush, layered flora merges with carefully curated foliage to create a perfectly harmonious residential landscape directly on the beachfront.

The frond community focuses on offering an active lifestyle, with wide walkable streets allowing pedestrians and bikers to access the beach through pocketed parks. The frond streetscape offers an intensely lush and fragrant landscape providing adequate shade coverage, with designated tree corridors alternating with street lighting and an additional layer of planting buffer to complete this idyllic verdant oasis.





Savour the refined, tropical atmosphere that surrounds you as you step out from your serene garden onto the sandy beach that lies at your doorstep. Enjoy the calming sounds of the waves and the openness of the sea for moments of pure relaxation.

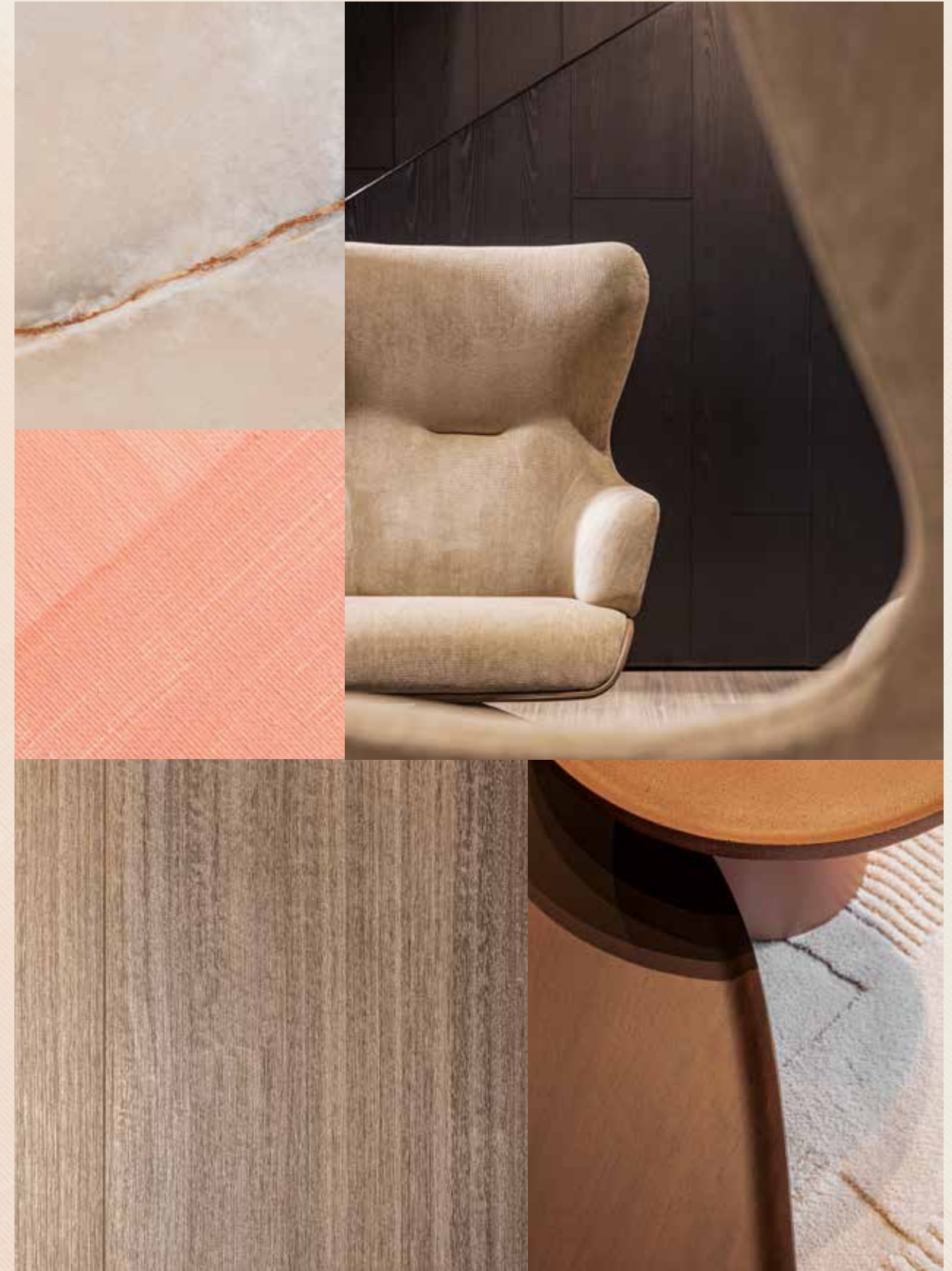


INTRODUCING THE CORAL COLLECTION

# CRAFTED WITH CARE

STRIKING ELEGANCE MEETS DARING DESIGN. DISCOVER THE SENSATIONAL **CORAL COLLECTION**.

A collection created with refined care and deep passion. Each unique in its own way, a Coral Villa is the ultimate statement home.

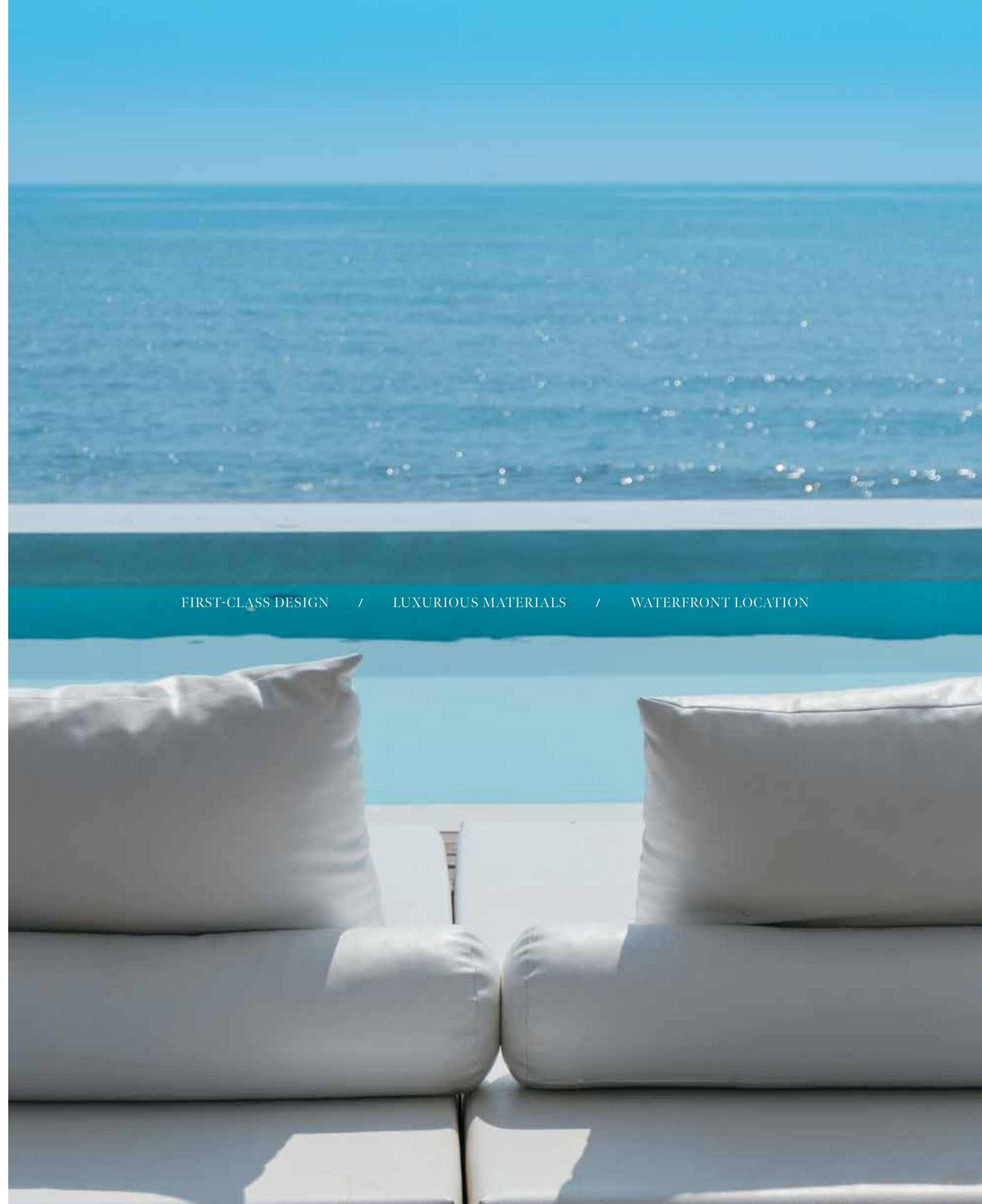


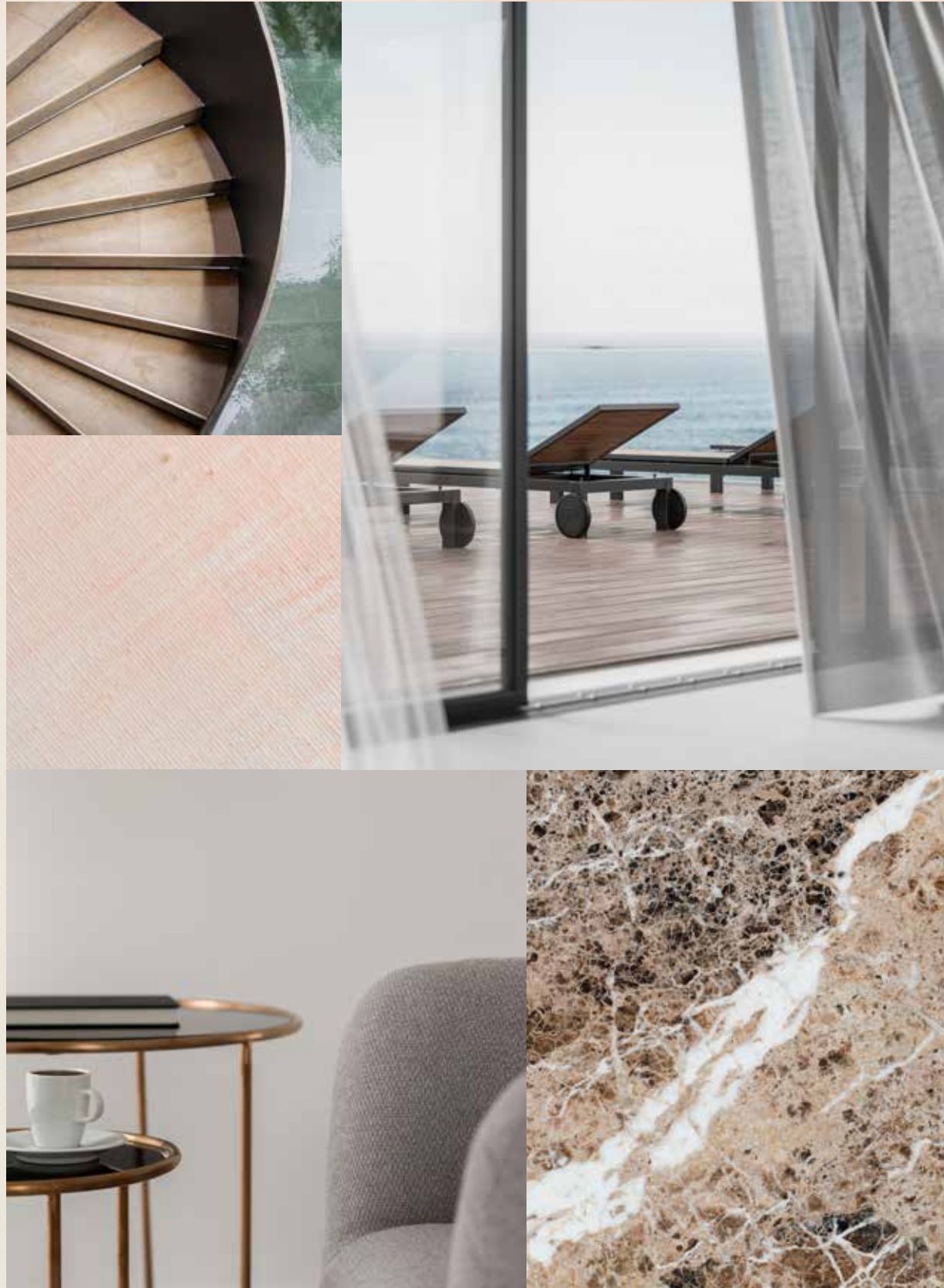
**First-class design**, a supreme waterfront location, and the peace and serenity of an exclusive, private neighbourhood.

HOMES DESIGNED WITH **UNPARALLELED** STYLE.

The Coral Collection is for those who appreciate distinctive architectural design, sophisticated style, and luxurious materials. With a wide variety of layouts, there is an ideal home to suit every lifestyle. The villas are designed so that each one offers a unique character, experience and environment, with a focus on exclusivity. Each property holds a timeless appeal, while embracing a unique contemporary design and providing seamless indoor-outdoor connectivity to savour the beachfront setting.

FIRST-CLASS DESIGN / LUXURIOUS MATERIALS / WATERFRONT LOCATION





LIVE IN A MASTERPIECE

OWN A PIECE OF

# HISTORY

2



Eight Unique Coral Villas

The Coral Collection	—	p.28
Villa Ruby Sunset	—	p.34

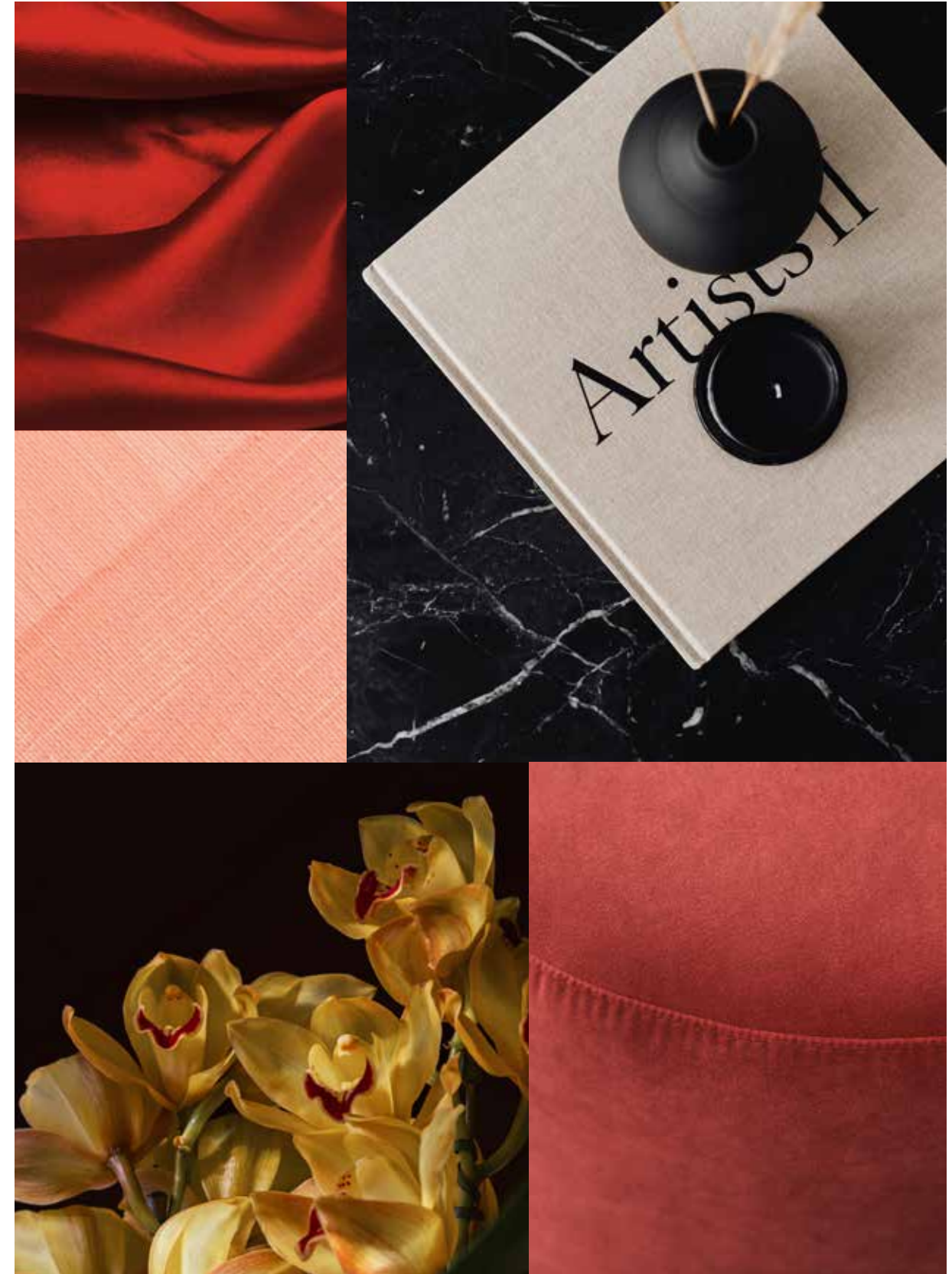
THE CORAL COLLECTION

# SUBLIME BEACHFRONT RESIDENCES

THE CONTEMPORARY **COMPOSITION** OF EACH STATEMENT VILLA HAS BEEN METICULOUSLY DESIGNED.

In a Coral Villa, everything is lit up by passion and perfection. Imagine living in a space where everything is seamlessly connected in one place – the sea, the sky, the gorgeous beachfront, and every design detail. Feel the energy, the prosperity of life flowing endlessly through the outdoors and indoors.

Seven outstanding ensuite bedrooms and a huge variety of relaxing spaces for an incomparable lifestyle, where you can be inspired intellectually and emotionally in every single moment. The Coral collection provides, in addition to the family room, a formal living space on the ground floor. A double maid's room is offered, as well as provision for a guard's house. Each space is designed to suit a variety of lifestyles and to offer comfort and service with ease to all residents.



Each residence, nestled in this sheltered neighbourhood, enjoys **direct beach connectivity** and has been carefully crafted to offer maximum flexibility, comfort, and privacy to residents.

TRUE LUXURY LIVING REFLECTS YOUR OWN DESIRES WITH SIMPLICITY AND STYLE.

Have you ever seen the light coming from a kaleidoscope? Colours, shapes, shades: a perfect vision that amazes you at a glance. A Coral Villa gives the same impression: each property is truly one of a kind. Every villa sparkles in a unique light and inspires the people who live inside in a distinctive and particular way. Each villa is bespoke to marvel at and realise individual needs and dreams. We build happiness and prosperity for all our residents.







BEACH CONNECTIVITY / COMFORT / PRIVACY



VILLA  
RUB Y  
SUN SET

Seven-Bedroom Property

“The indoor spaces have been designed to best capture panoramic views.”

WHITESPACE - ARCHITECT

VILLA RUBY SUNSET

STYLE, BEAUTY AND  
FUNCTIONALITY

THIS HOME EMBRACES THE NATURAL  
ELEMENTS OF ITS BEAUTIFUL  
BEACHFRONT SETTING.

Picture the warmth and beauty of a magnificent, glowing sunset after a long day at work. As the brilliant sunshine of the day gradually fades to a deep ruby red, the outdoor space of this captivating, jewel-like home comes alive. Watch from the glorious beachfront garden of this precious property as the radiant sun slowly disappears below the horizon and the bright city lights flicker in the distance. Feel as though you are living between the meeting point of sea and sky as you look out over glistening views of the horizon. Discover the intimacy of luxury as you relax in your private residence directly on the beachfront.



“The indoor and outdoor spaces are seamlessly connected.”

WHITESPACE - ARCHITECT





HOST MEMORABLE DINNER PARTIES AGAINST THE BACKDROP OF A SPECTACULAR SUNSET. EMBRACE THE CAPTIVATING, TROPICAL ATMOSPHERE THAT IS ENHANCED BY DAZZLING SEA VIEWS.

The elegant façade, complete with wood-like panels, is clean, polished and perfectly in tune with its natural setting.

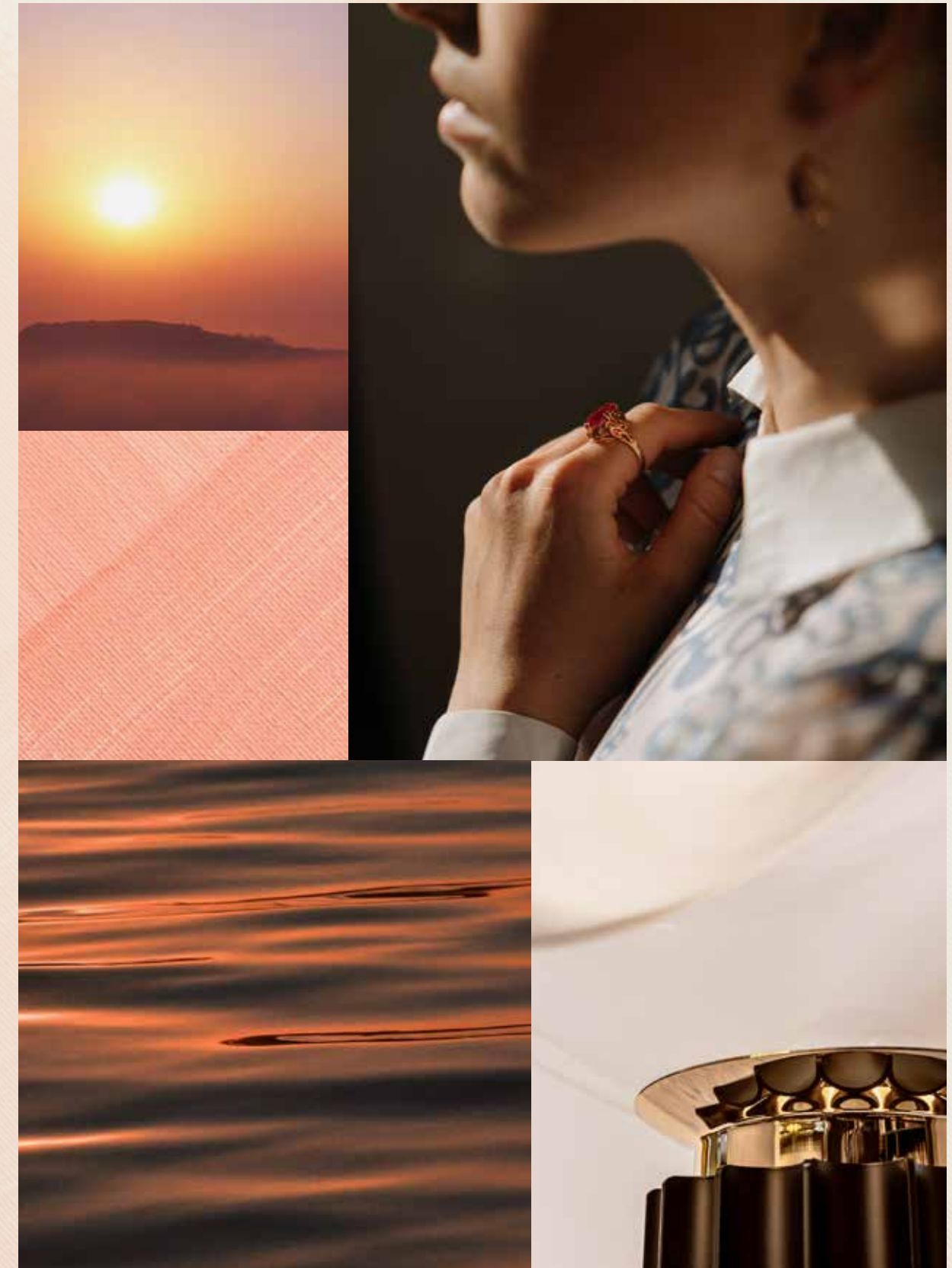
You are welcomed by a soaring, double-height foyer which provides a perfectly bright and airy space.



Relax and unwind under **glowing sunlight** in one of the many well-appointed rooms of this peaceful home.

A SERENE LIVING ENVIRONMENT.

The series of sophisticated spaces in this delightful home promotes a calming, comfortable atmosphere enhanced by neutral tones, fine materials, and views over the natural beauty of Palm Jebel Ali. This magnificent home is one of the spectacular gems of this vibrant destination.





PASS THROUGH THE BRIGHT AND INVITING ENTRANCE FOYER TO BE GREETED BY THE EXQUISITE FORMAL DINING ROOM. THIS SOPHISTICATED SPACE, WHICH DISPLAYS A REFINED, NATURAL BEAUTY, SPARKLES LIKE A GLISTENING JEWEL.

The separate family living area includes a fabulous show kitchen with astounding sea views. The beautiful kitchen island is sure to become a beloved feature of this elegant home.





The refined lounge area, which completes the family living space, is the ideal place for relaxation.

Enjoy special family moments surrounded by those you love in this brilliantly bright environment.



The elegant formal living area enjoys glittering water views and seamless garden connectivity. Take a front-row seat for the daily sunset, and watch as the blue sky of day slowly fades to a soft red at night.

The exceptionally spacious master suite will soon become your personal haven.

Look out over the horizon from this relaxing and tranquil space.





A home must be practical as well as **beautiful**.  
This villa encompasses both aspects.

RELAX IN TIMELESS STYLE.

This inviting villa is both opulent and comfortable, natural and decorative. The soft neutral tones create the ideal environment in which you can add your personal flair.

Choose to embellish this jewel-like home with your treasured possessions and personal style and create your perfect living environment.

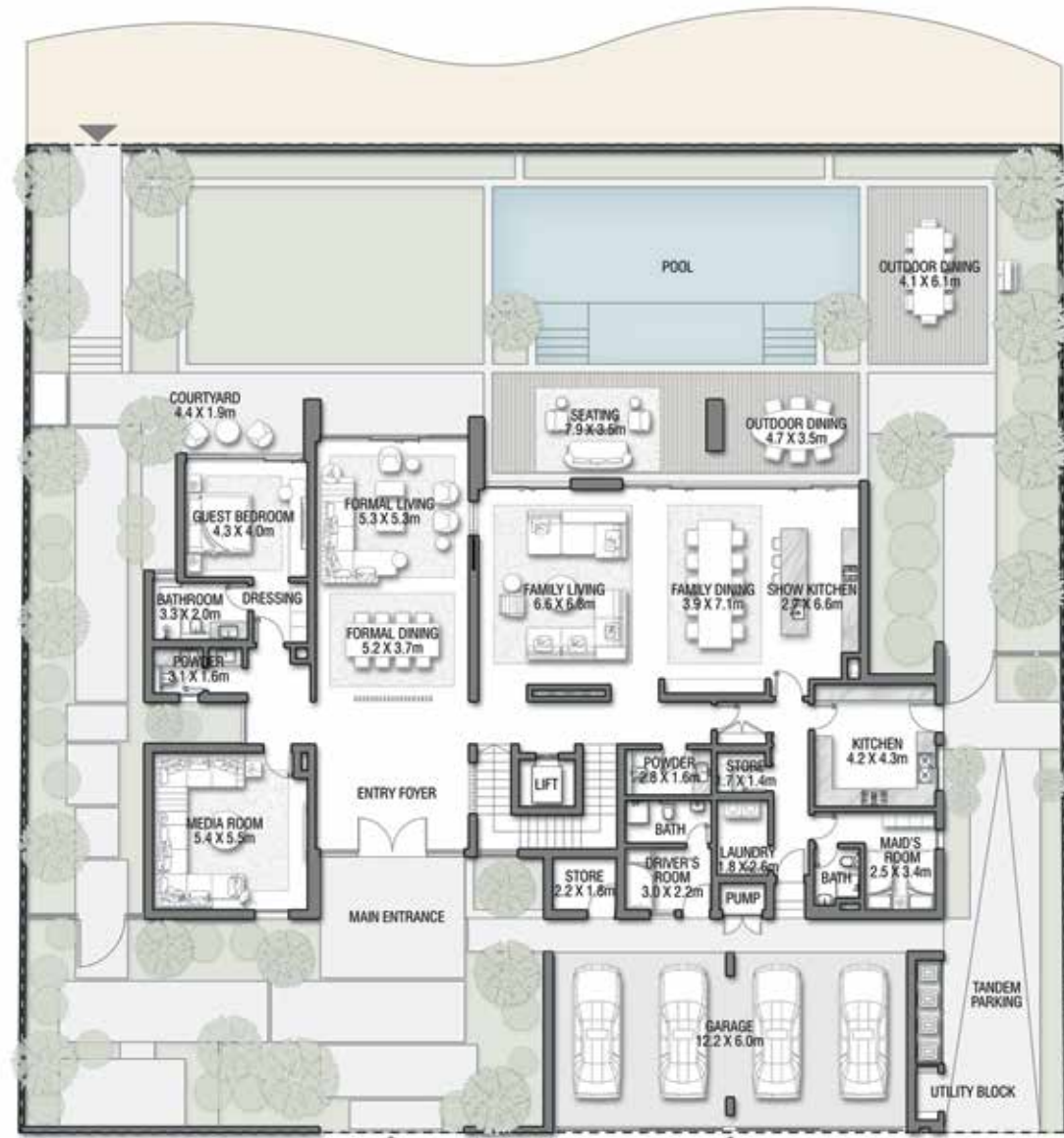
Take time to practise your self-care rituals from the comfort of your luxurious master bathroom.

Feel uplifted and inspired as you are surrounded by the beauty of natural materials.

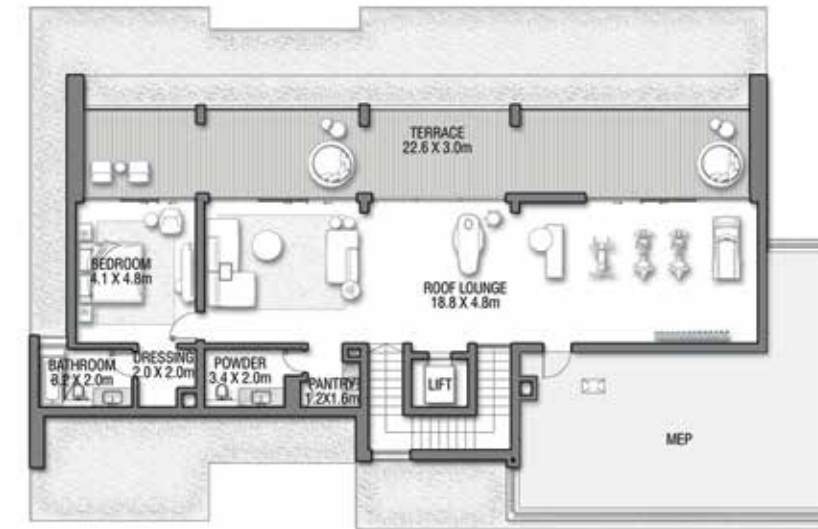


# RUBY SUNSET

Coral Villas Collection



GROUND FLOOR



SECOND FLOOR

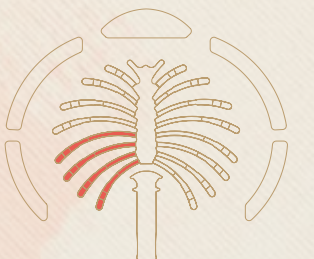
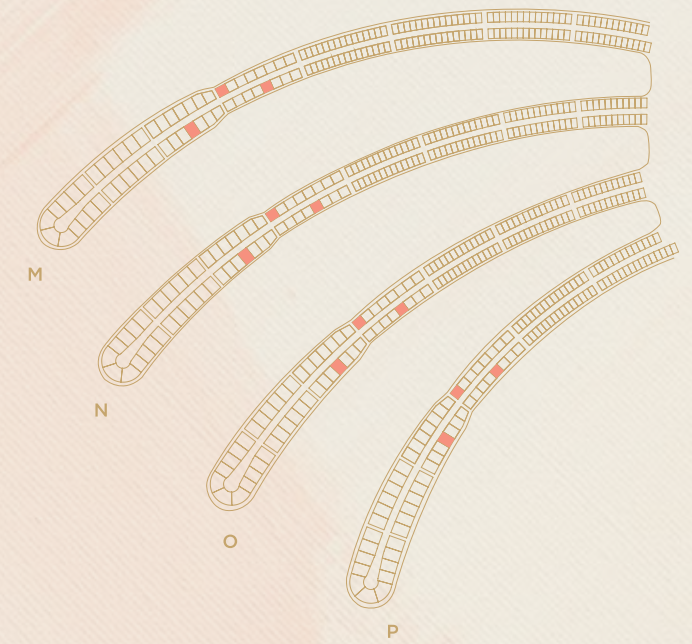


FIRST FLOOR

G + 2

7 BEDROOMS + FORMAL AND FAMILY LOUNGES  
+ LIBRARY + MEDIA ROOM + ROOF LOUNGE  
AND TERRACE

FLOOR TYPE	SQ. M.	SQ. FT.
Ground Floor	381.38	4,105.14
Balcony / Terrace / Porch - GF	1.38	14.85
First Floor Area	362.65	3,903.53
Balcony / Terrace - First Floor	60.00	645.83
Second Floor Area	166.90	1,796.50
Balcony / Terrace - Second Floor	72.71	782.64
Garage - Covered	84.26	906.97
<b>TOTAL BUILT-UP AREA</b>	<b>1,129.28</b>	<b>12,155.47</b>
Garage with Pergola	0.0	0.0
<b>TOTAL AREA</b>	<b>1,129.28</b>	<b>12,155.47</b>



Numbers, square footage and floor plans are approximate. Final dimensions, square footage and floor plans may vary and are subject to change without notice. The developer reserves the right to make revisions. Built-Up Area is measured in accordance with Dubai Land Department standards. Plans, artistic renderings, landscaping and images are for illustrative purposes only and are subject to change without notice. Landscape shown is indicative and not provided by the developer. Pool layout and configuration shown on floor plans are for general illustrative purposes only and are not provided by the developer. The Bespoke Edition Option offered to the buyer at additional price will include a standard pool offering.

INFO@NAKHEEL.COM  
800 NAKHEEL

THE CORAL COLLECTION

**PALM  
JEBEL ALI  
NAKHEEL**





